

2022 UK ENVIRONMENTAL PERFORMANCE DATA

Organisation & Boundary

An operational control approach has been used in order to define the organisational boundary and is the basis for determining the Scope 1, Scope 2 and Scope 3 emissions for which the BNP Paribas Group is responsible. The data contained within this report covers a 12-month period from from 01/10/2021 to 30/09/2022 and covers 100% of the UK FTE workforce managed at 31 December 2022. The data collection, processing and verification periods do not allow reporting on a current calendar year.

Methodology

An environmental reporting system is in place across the BNP Paribas Group to quantify and calculate the Greenhouse Gas (GHG) emissions associated with its operations. An internal protocol is reviewed and communicated annually to all employees contributing to this reporting. The measuring and reporting of environmental performance data is carried out in line with the GHG Protocol issued by the WRI and WBCSD, the general principles of the GRI and ISO standards on environmental communication. Where available data covers only part of the reporting scope, missing data has been extrapolated using a uniform methodology across the BNP Paribas Group. For energy, if there is a value for at least one reporting unit at country level, it is used to calculate the ratio m²/building type and this country ratio is then applied. For business travel, similarly this is extrapolated using a country ratio/FTE approach.

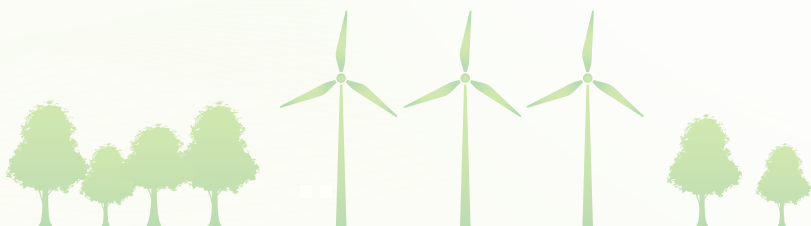
Absolute GHG Emissions		UK TERRITORY
Scope 1: Direct GHG emissions from natural gas (tCO ₂ e)		1330.80
Scope 2: Indirect GHG emissions from purchased electricity and district heat (tCO ₂ e)	Market-based	21.885
	Location-based	9215.742
Total Scope 1 and 2 (tCO₂e)	Market-based	1352.686
	Location-based	10546.54
Scope 3: Indirect emissions from business travel including air, rail, company-leased and employee owned vehicles (tCO ₂ e)		6888.67
Total Scope 1, 2 & 3 (tCO₂e)	Location-based	17435.22
Emissions Intensity		
Total emissions intensity (tCO ₂ e per FTE)	Scopes 1, 2 and 3 location-based emissions per full-time equivalent employee	2.33

Absolute Energy Consumption		UK TERRITORY
Natural gas (kWh)		6,571,827
Electricity (kWh) _w		40,173,676
District Heat (kWh)		39,195
Total Energy Consumption (corresponding to Scope 1 & Scope 2 emissions) (kWh)		46,784,698
Energy Intensity		
Occupied premises energy intensity (kWh per m ²)	Scope 1 & 2 Energy Consumption from occupied premises per m ² of floor area	430

Paper Consumption		UK TERRITORY
Total Paper Consumption (tonnes)		198
Total Paper Consumption per FTE (kg)		26
Responsible Paper Purchased (%)		59%

Deloitte has verified the data contained in this performance summary to a reasonable level of assurance.

Emission Factors: Scope 1: WRI (2008) GHG Protocol tool for stationary combustion. Version 4.0 GWP from IPPC AR4 (2007). Scope 2: Location-based IEA (CO₂ Highlights) 2021 – Données 2019; Market based RE-DISS II; AIB European Residual Mix (2020). Version 1.0 2021-05-31. Scope 3: Air & Road UK DEFRA, Passenger Vehicles 2019. Rail ADEME V21.2.



ENVIRONMENTAL PERFORMANCE DATA DISCLOSED IN ORDER TO COMPLY WITH THE UK STREAMLINED ENERGY & CARBON REPORTING (SECR) REQUIREMENTS:

Absolute Emissions		Arval	Asset Management	Leasing Solutions	Personal Finance	Real Estate	Vauxhall Finance
Scope 1: Direct GHG emissions from natural gas (tCO ₂ e)		359.04	35.64	84.27	79.28	234.93	92.66
Scope 2: Indirect GHG emissions from purchased electricity and district heat (tCO ₂ e)	Market-based	0	0	0.00	0	10.83	0
	Location-based	229.37	209.05	82.79	81.82	823.52	67.07
Total Scope 1 and 2 (tCO₂e)	Market-based	359.04	35.64	84.27	79.28	245.76	92.66
	Location-based	588.41	244.70	167.05	161.11	1058.46	159.73
Scope 3: Indirect emissions from business travel including air, rail, company-leased and employee owned vehicles (tCO ₂ e)		56.25	121.12	214.26	68.20	696.43	393.15
Total Scope 1, 2 & 3 (tCO₂e)	Location-based	644.66	365.82	381.31	229.30	1754.88	552.88
Emissions Intensity							
Occupied premises emissions intensity (tCO ₂ e)	Scope 1 & 2 location-based emissions from occupied premises per full-time equivalent employee	0.82	1.56	0.35	0.23	0.79	0.45
Occupied premises emissions intensity (tCO ₂ e)	Scope 1 & 2 location-based emissions from occupied premises per m2 of floor area	0.07	0.15	0.04	0.04	0.06	0.02
Total emissions intensity (tCO ₂ e per FTE)	Scopes 1, 2 and 3 location-based emissions per full-time equivalent employee	0.90	2.33	0.81	0.32	1.31	1.56

Absolute Energy Consumption		Arval	Asset Management	Leasing Solutions	Personal Finance	Real Estate	Vauxhall Finance
Natural gas (kWh)		1,773,044	176,020	416,121	391,524	1,160,158	457,583
Electricity (kWh)		1,000,721	912,096	361,206	356,992	3,558,402	292,630
District Heat (kWh)		-	-	-	-	39,195	-
Fuel used for emergency generators (kWh)		-	-	-	-	-	-
Total Energy Consumption (corresponding to Scope 1 & Scope 2 emissions) (kWh)		2,773,765	1,088,938	777,327	748,516	4,757,755	750,213
Energy Intensity							
Occupied premises energy intensity (kWh per m2)	Scope 1 & 2 Energy Consumption from occupied premises per m2 of floor area	324	680	207	185	258	102